



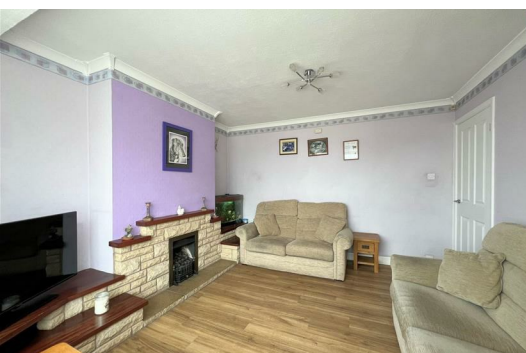
20 Woodford Crescent

Plympton, Plymouth, PL7 4QY

£325,000



Spacious extended semi-detached Stanbury-built family home located on a quiet road in Woodford, within easy reach of several schools, shops & other amenities. The accommodation briefly comprises a porch, entrance hallway, lounge, dining room, sun room, kitchen & downstairs cloakroom/wc. On the first floor there are 4 bedrooms, ensuite shower room & a 4-piece family bathroom. Externally, there is a fully-enclosed sunny rear garden, parking for 3 cars to the front and a garage.



WOODFORD CRESCENT, PLYMPTON, PL7 4QY

ACCOMMODATION

Composite door with decorative obscured glass panels inset opening into the entrance porch.

ENTRANCE PORCH 6'6" x 4'9" (2.00 x 1.45)

Wooden door with obscured glass panels inset opening into the entrance hallway. uPVC double-glazed windows with obscured glass either side of the front door to the front elevation.

ENTRANCE HALLWAY 12'5" x 6'0" (3.80 x 1.83)

Doors providing access to the ground floor accommodation. Stairs ascending to the first floor accommodation. Under-stairs storage cupboard.

DOWNSTAIRS CLOAKROOM/WC 4'6" x 2'3" (1.38 x 0.71)

Fitted with a close coupled wc and a wall-mounted corner sink. Fully-tiled walls.

LOUNGE 13'7" into the bay x 12'2" (4.16 into the bay x 3.73)

Feature gas fireplace with a stone surround and York Stone hearth. Half bay window with a uPVC double-glazed window to the front elevation.

DINING ROOM 12'5" x 11'4" max (3.80 x 3.46 max)

uPVC double-glazed sliding doors leading to the sun room. Feature fireplace.

SUN ROOM 8'7" x 7'10" (2.62 x 2.39)

uPVC double-glazed door with an obscured glass panel inset leading into the kitchen. uPVC double-glazed sliding doors to the rear elevation leading out to the rear garden.

KITCHEN 16'9" x 7'7" narrowing to 6'10" (5.11 x 2.32 narrowing to 2.09)

Selection of base and wall-mounted units with rolled-edge laminate work-top. Inset stainless-steel one-&-a-half bowl single drainer sink with a mixer tap. Space for fridge-freezer, washing machine, dishwasher and oven. uPVC double-glazed window to the rear elevation.

FIRST FLOOR LANDING ONE 3'9" x 3'5" (1.15 x 1.06)

Doorway leading to bedroom one. uPVC double-glazed window to the rear elevation.

BEDROOM ONE 10'5" x 9'3" (3.19 x 2.82)

uPVC double-glazed window to the front elevation. Doorway opening to the ensuite shower room.

ENSUITE SHOWER ROOM 6'2" x 4'3" (1.89 x 1.31)

Comprising a corner shower cubicle with an electric shower, close coupled wc and a pedestal sink. uPVC double-glazed window with an obscured glass panel to the rear elevation.

FIRST FLOOR LANDING TWO 8'1" x 7'5" (2.47 x 2.28)

Doors providing access to bedrooms two, three and four and the family bathroom.

BEDROOM TWO 13'4" x 11'7" max (4.08 x 3.54 max)

Built-in wardrobes, drawers and a dressing table. Half bay window with a uPVC double-glazed window to the front elevation.

BEDROOM THREE 12'5" x 10'10" (3.80 x 3.31)

Vanity hand basin. Built-in storage cupboard. Cupboard with a set of wooden stairs providing access to a loft room. uPVC double-glazed window to the rear elevation.

BEDROOM FOUR 6'7" x 6'7" (2.03 x 2.01)

uPVC double-glazed window to the front elevation.

FAMILY BATHROOM 7'8" x 7'4" (2.36 x 2.24)

Comprising a corner shower cubicle with a mains shower, panel bath, pedestal sink and a close coupled wc. Loft hatch providing access to the loft storage space.

LOFT SPACE 11'11" x 11'4" (3.65 x 3.47)

A non-habitable room. Velux window to the rear elevation.

GARAGE 17'10" x 9'4" (5.44 x 2.86)

Up-&-over door. Wall-mounted consumer unit. Power and lighting. Shelving. uPVC double-glazed door with obscured glass panel inset to the rear leading to the rear garden.

OUTSIDE

The property is approached via a brick-paved driveway bordered by a low level wall. Adjacent to the driveway is an area of front garden laid to gravel stones and some mature shrubs, plants and trees together with a small pond with a water feature. The rear garden is accessed from the sun room and is fully enclosed low maintenance easterly-facing garden. There is a raised area laid to astro turf with a patio area at the end. There is also a brick-built barbecue area and wall-mounted power points. A paved path leads around the side of the property to the garage door. Also to the side of the property, is a small patio area, shed and an outdoor shower area with a mains shower.

WHAT3WORDS

///bottle.sting.salt

COUNCIL TAX

Plymouth City Council
Council Tax Band: C

SERVICES

The property is connected to all the mains services: gas, electricity, water and drainage.

Area Map

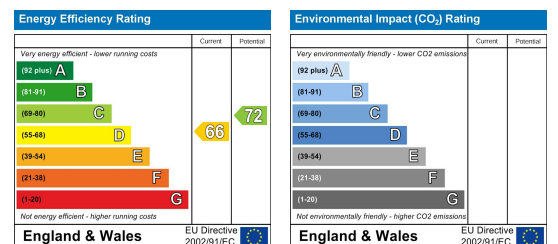


Floor Plans



Made with Metropix ©2026

Energy Efficiency Graph



These particulars, whilst believed to be accurate are set out as a general outline only for guidance and do not constitute any part of an offer or contract. Intending purchasers should not rely on them as statements of representation of fact, but must satisfy themselves by inspection or otherwise as to their accuracy. No person in this firm's employment has the authority to make or give any representation or warranty in respect of the property.